

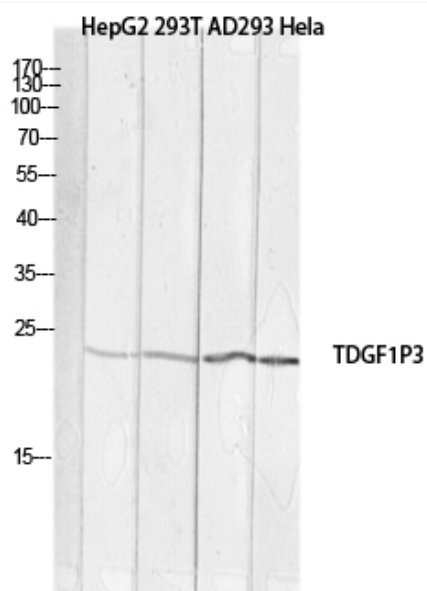


Cripto-3 Polyclonal Antibody

Catalog No	YP-Ab-16074
Isotype	IgG
Reactivity	Human;Rat;Mouse;
Applications	WB;ELISA
Gene Name	TDGF1P3
Protein Name	Putative teratocarcinoma-derived growth factor 3
Immunogen	The antiserum was produced against synthesized peptide derived from the Internal region of human TDGF1P3. AA range:1-50
Specificity	Cripto-3 Polyclonal Antibody detects endogenous levels of Cripto-3 protein.
Formulation	Liquid in PBS containing 50% glycerol, 0.5% BSA and 0.02% sodium azide.
Source	Polyclonal, Rabbit,IgG
Purification	The antibody was affinity-purified from rabbit antiserum by affinity-chromatography using epitope-specific immunogen.
Dilution	Western Blot: 1/500 - 1/2000. ELISA: 1/10000. Not yet tested in other applications.
Concentration	1 mg/ml
Purity	≥90%
Storage Stability	-20°C/1 year
Synonyms	TDGF1P3; CRIPTO3; TDGF2; TDGF3; Putative teratocarcinoma-derived growth factor 3; Cripto-3 growth factor; Epidermal growth factor-like cripto protein CR3; Teratocarcinoma-derived growth factor 1 pseudogene 3
Observed Band	21kD
Cell Pathway	Cell membrane .
Tissue Specificity	Expressed weakly in lung, colon and breast. Expressed also strongly in primary cancer tissues; lung and colon cancers.
Function	function:Could play a role in the determination of the epiblastic cells that subsequently give rise to the mesoderm.,similarity:Contains 1 EGF-like domain.,tissue specificity:Preferentially expressed in gastric and colorectal carcinomas than in their normal counterparts.,
Background	The TDGF3 locus has characteristics of a retrotransposon, including lack of introns and a poly(A) sequence. [provided by RefSeq, Jul 2008],
matters needing attention	Avoid repeated freezing and thawing!

**Usage suggestions**

This product can be used in immunological reaction related experiments. For more information, please consult technical personnel.

Products Images

Western blot analysis of HepG2, 293T, AD293, HeLa lysis using TDGF1P3 antibody. Antibody was diluted at 1:1000. Secondary antibody (catalog#: RS0002) was diluted at 1:20000.